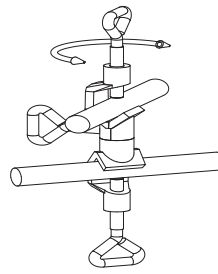


Muffe drehbar

- 18/10-Stahl
- T-Guss verchromt

Bosshhead swivel type

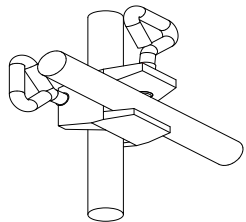
- 18/10 stainless steel
- Malleable cast iron, chromium plated



5302/5362



Material	d	M	Typ	Winkel ↺	Artikel Nr.
18/10-Stahl	16,5	6	2	0-360	5302
T-Guss verchromt	16,5	8	1	0-360	5362



5303

Gittermuffe

- 18/10-Stahl
- T-Guss verchromt

Bosshhead for frames

- 18/10 stainless steel
- Malleable cast iron, chromium plated

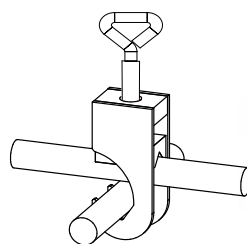
Material	d	M	Typ	Winkel ↺	Artikel Nr.
18/10-Stahl	13,5	6	2	90	5303
18/10-Stahl	13,5	6	3	90	5313
T-Guss verchromt	13	6	2	90	5363
T-Guss verchromt	13	6	3	90	5373

Hakenmuffe

- 18/10 Stahl
- Stahl vernickelt

Hook-bosshhead

- 18/10 stainless steel
- Steel nickel plated



5304/5364

Material	d	M	Typ	Winkel ↺	Artikel Nr.
18/10-Stahl	13	8	2	90	5304
Stahl vernickelt	13	8	2	90	5364