

Ordering information – HPTLC LiChrospher® silica gel 60

| Product | Ordering No. | Format [cm] | Backing | Contents of one package |
|--|--------------|-------------|-----------|-------------------------|
| HPTLC LiChrospher® silica gel 60 F _{254s} | 1.15445.0001 | 20 x 10 | glass | 25 plates |
| HPTLC LiChrospher® silica gel 60 F _{254s} | 1.05586.0001 | 20 x 20 | aluminium | 25 sheets |
| HPTLC LiChrospher® silica gel 60 AMD WR F _{254s} extra thin * | 1.05647.0001 | 20 x 10 | glass | 25 plates |

Layer thickness: 200 µm / * 100 µm | F_{254s}: Blue fluorescent indicator

Ordering information – HPTLC LiChrospher® RP-modified silica gel 60

| Product | Ordering No. | Format [cm] | Backing | Contents of one package |
|---|--------------|-------------|---------|-------------------------|
| HPTLC LiChrospher® silica gel 60 RP-18 WF _{254s} | 1.05646.0001 | 20 x 10 | glass | 25 plates |

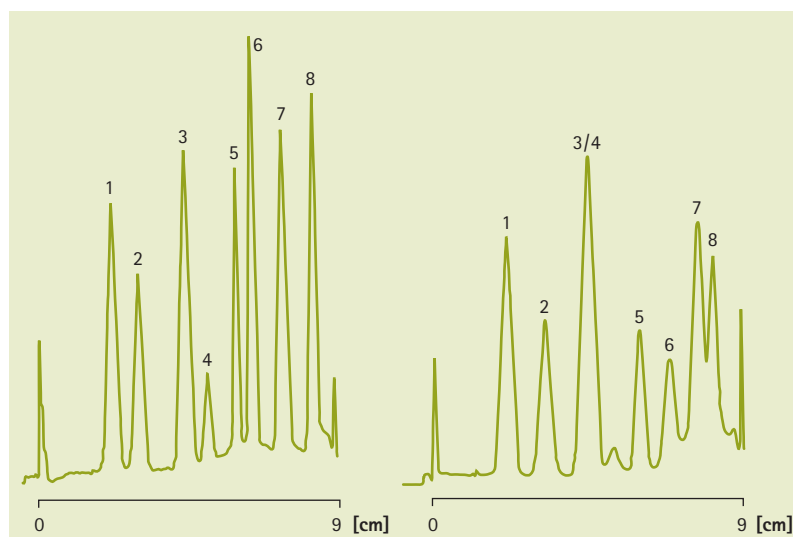
Layer thickness: 200 µm | F_{254s}: Green fluorescent indicator

Applications of LiChrospher® HPTLC

LiChrospher® HPTLC plates are suitable for a broad range of applications but especially for the analysis of highly complex low concentration samples, e.g. **analysis of pesticides mixtures** or **assaying of pharmaceutical compounds**.

A. HPTLC LiChrospher® Si 60 plate

B. Conventional HPTLC Si 60 plate



Pesticide separation on (A) HPTLC LiChrospher® and on a conventional (B) HPTLC plate demonstrating that using LiChrospher® plates allows the separation of more substances.

Pesticide separation

| | |
|----------------------|---|
| Sample | 1. Hexazinone 2. Metoxuron 3. Monuron 4. Aldicarb 5. Azinphos-methyl 6. Prometryn 7. Pyridate 8. Trifluralin |
| Sample volume | 50 mL |
| Mobile phase | Petroleum benzine 40-60°C / acetone 70/80 |
| Detection | UV 254 nm |