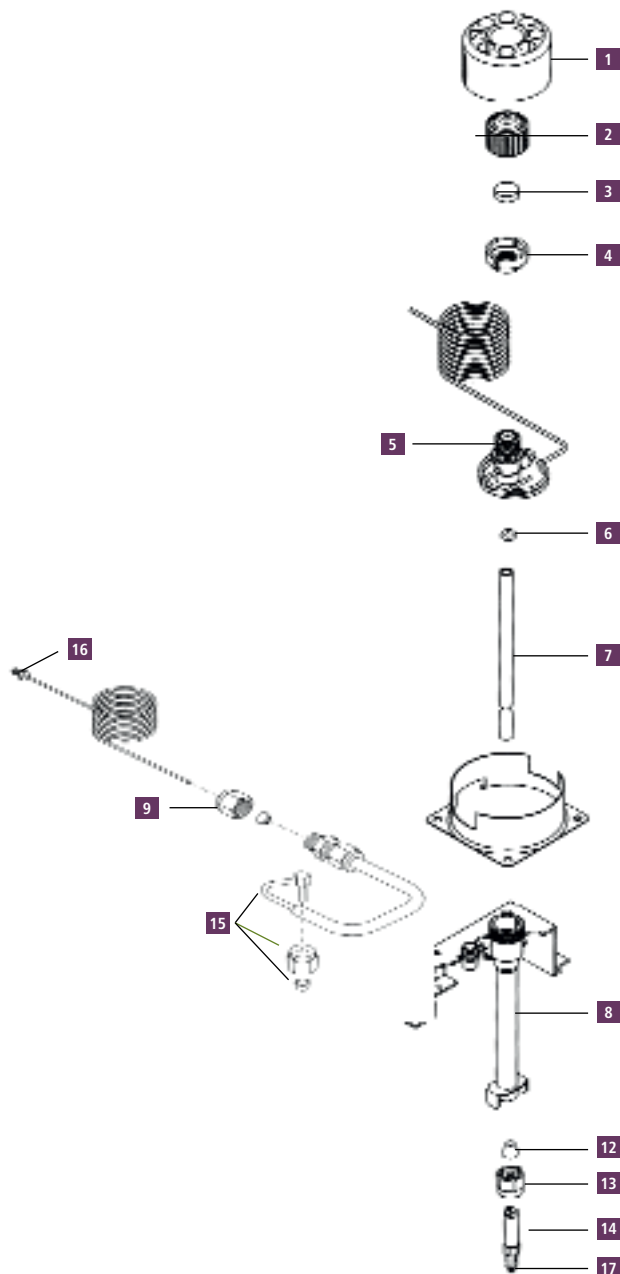


Capillary Injector Replacement Parts*



Description	Part No.
1 Injector Cover	N6101482
2 Septum Cap	N6100153
3 PerkinElmer Green Injection Septum (pkg. 50)	N6621028
4 Injector Top Nut	N6101358
5 Injector Head	N6100158
O-Ring, Silicone for Glass Liner (pkg. 10) Maximum injector temperature 250 °C	N6101374
O-Ring, Graphite for Glass Liner (pkg. 5) Maximum injector temperature 450 °C	N6101378
6 O-Ring, KALREZ® for Glass Liner (pkg. 1) Maximum injector temperature 450 °C	N9302782
O-Ring, Viton® for Glass liner (pkg. 1) Maximum injector temperature 250 °C, recommended for use with Mass Spec. ships with instrument	N9302783
Quartz Liner (2 mm) for Splitless Operation	N6121002
Quartz Liner (4 mm) for Split Operation or Large Volume Splitless Injection	N6121001
Glass Liner (2 mm) for Splitless Operation	N6101372
7 Glass Liner (4 mm) for Split Operation	N6101052
Deactivated Liner for Splitless Operation 2 mm, packed with wool. (pkg. 5)	N6121021
Deactivated Liner for Split Operation 4 mm, packed with wool. (pkg. 5)	N6121020
Deactivated Uniliner 4 mm, packed with wool. (pkg. 5)	N6121022
8 Injector Body	N6100047
9 1/8 in. Swagelok™ Nut Brass (pkg. 5)	N9300056
10 Restrictor**	N6101034
11 1/8 in. Graphite/Vespel Ferrule (pkg. 10)*	09920301
12 1/4 in. Graphite Ferrule (pkg. 10)	09920140
13 1/4 in. Swagelok Nut, Stainless Steel (pkg. 5)	N9300055
14 Injector Adapter	N6100157
15 Charcoal Trap	N6100275
Charcoal Trap for PPC Version*	N6100331
16 Split Vent Tube	N6100159
17 Column Nut 1/16 in. Long length for reversed ferrule (pkg. 5)	09903392

* Not suitable for Clarus 590 and 690 models.** Not shown