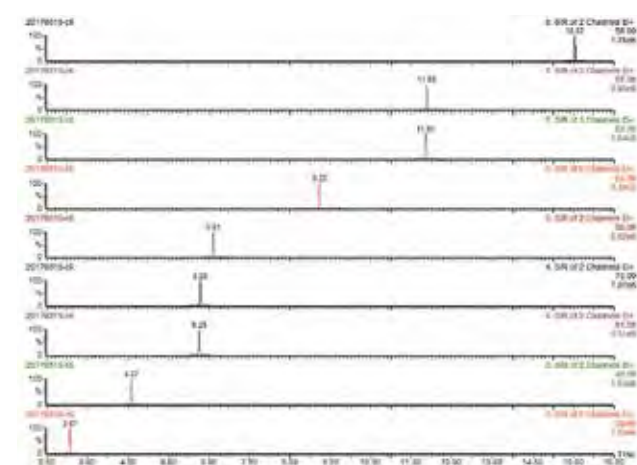


## Industrial

Determination of nine carbonates in lithium ion battery electrolyte by GC/MS.

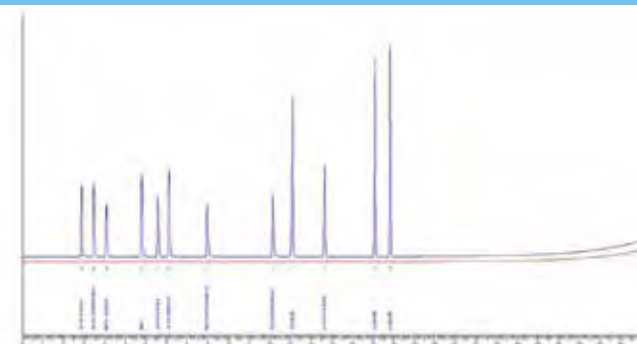


Recommended Column: Elite-35ms, 30 m x 0.25 mm x 0.25  $\mu$ m  
(Part No. **N9316438**)

Liner: Capillary splitless deactivated glass liners with deactivated wool (**N9306235**)

## Food and Flavor

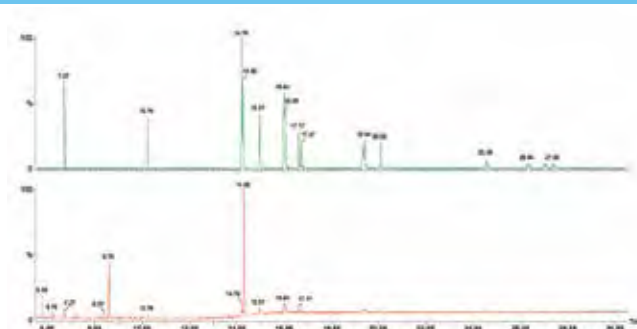
Determination of Residual Solvents in Flexible Packaging According to EN 13628-2:2004.



Recommended Column: Elite-1, 30 m, 0.32 mm, 3.0  $\mu$ m, Part No. **N9316025**

## Food

The Preparation and Analysis of Polycyclic Aromatic Hydrocarbons in Meat by GC/MS.

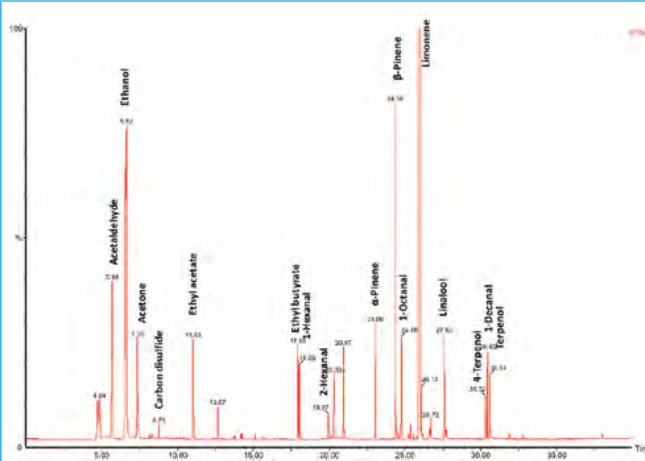


Column: Elite-5ms column, 30 m x 0.25 mm x 0.25  $\mu$ m, Part No. **N9316282**

Liner Deactivated Liner, Part No. **N6502002**

## Food and Flavor

The Qualitative Characterization of Fruit Juice Flavor using a TurboMatrix Hs Trap and a Clarus SQ 8 GC/MS.



Recommended Column: Elite-5ms, 60 m x 0.25 mm x 1.0  $\mu$ m, Part No. **N9316287**