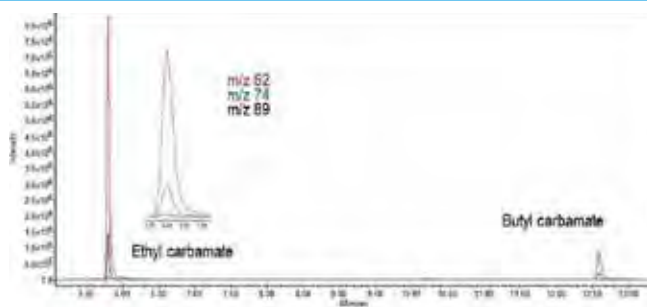


## Food and Flavor

### Analysis of Ethyl Carbamate Using GC/MS

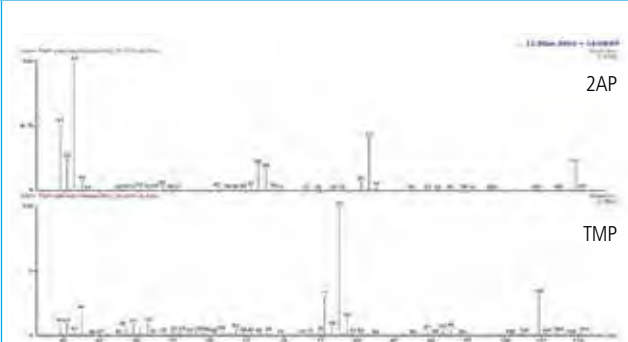


Recommended Column: Elite-35, 30 m x 0.25 mm x 0.25  $\mu$ m  
(Part No. **N9316145**)

Liner: 2 mm ID glass (no glass wool)

## Food and Flavor

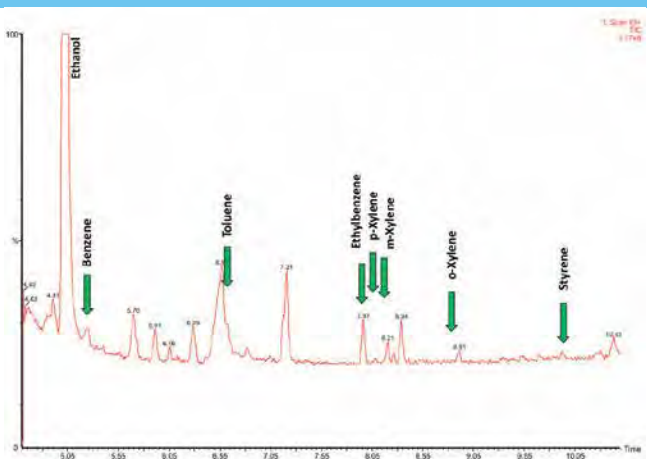
### Quantification of Rice Aroma, 2-Acetyl-1-Pyrroline (2-AP), Using TurboMatrix Headspace Trap Coupled with GC/NPD and GC/MS



Recommended Column: Elite-5ms, 30 m x 0.32 mm x 0.25  $\mu$ m  
(Part No. **N9316293**)

## Food and Flavor

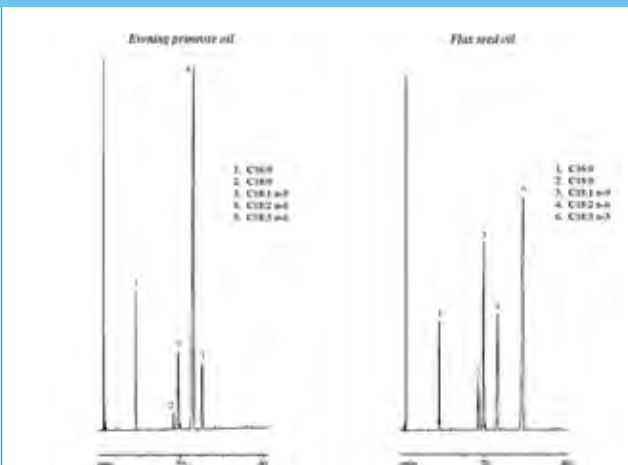
### The Determination of Low Levels of Benzene, Toluene, Ethylbenzene, Xylenes and Styrene in Olive Oil Using a Turbomatrix HS and a Clarus SQ 8 GC/MS



Recommended Column: Elite-WAX, 30 m x 0.25 mm x 1.0  $\mu$ m  
(Part No. **N9316485**)

## Food and Flavor

### Determination of Omega-3 (n-3) and Omega-6 (n-6) Fatty Acid Composition in Evening Primrose Oil and Flax Seed Oil



Recommended Column: Elite-WAX, 30 m x 0.25 mm x 0.25  $\mu$ m  
(Part No. **N9316403**)