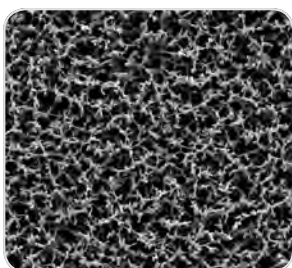


## Cellulose Nitrate



Cellulose nitrate membrane filters are indicated for many general laboratory applications where a membrane with a high non-specific adsorption is suitable. They are hydrophilic, have high flow rates thanks to their symmetric structure and are compatible with aqueous solutions

(pH 4 to 8), hydrocarbons and several other organic solvents. The cellulose nitrate membranes are available in different pore sizes from 0.2  $\mu\text{m}$  to 8  $\mu\text{m}$ .

### Specifications

Type	Pore Size ( $\mu\text{m}$ )	Thickness ( $\mu\text{m}$ )	Bubble Point (bar)	Water Flow Rate (ml/min/cm <sup>2</sup> /bar)	Burst Pressure (bar)
11327	0.2	130	4.2	25	$\geq 0.35$
11306	0.45	130	2.4	70	$\geq 0.3$
11305	0.65	130	2	130	$\geq 0.25$
11304	0.8	130	1.4	200	$\geq 0.2$
11303	1.2	130	1	200	$\geq 0.2$
11302	3	130	0.5	430	$\geq 0.2$
11342	5	130	0.5	570	$\geq 0.15$
11301	8	130	0.3	750	$\geq 0.1$

### Ordering Information

#### Filter Discs

Dia. in mm	11301 (8 $\mu\text{m}$ )*	11302 (3 $\mu\text{m}$ )*	11303 (1.2 $\mu\text{m}$ )*	11304 (0.8 $\mu\text{m}$ )*
13	11301--13-----N	11302--13-----N	11303--13-----N	11304--13-----N
20				11304--20-----N
25	11301--25-----N	11302--25-----N	11303--25-----N	11304--25-----N
30				11304--30-----N
37	11301--37-----N			11304--37-----N
47	11301--47-----N	11302--47-----N	11303--47-----N	11304--47-----N
50	11301--50-----N	11302--50-----N	11303--50-----N	11304--50-----N
68		11302--68-----G		
70	11301--70-----G			
90		11302--90-----G	11303--90-----G	11304--90-----G
100	11301-100-----N	11302-100-----G	11303-100-----G	11304-100-----G
Dia. in mm	11305 (0.65 $\mu\text{m}$ )*	11306 (0.45 $\mu\text{m}$ )*	11327 (0.2 $\mu\text{m}$ )*	11342 (5 $\mu\text{m}$ )*
13	11305--13-----N	11306--13-----N	11327--13-----N	11342--13-----N
20		11306--20-----N		
25	11305--25-----N	11306--25-----N	11327--25-----N	11342--25-----N
30		11306--30-----N		
37		11306--37-----N		
47	11305--47-----N	11306--47-----N	11327--47-----N	11342--47-----N
50	11305--50-----N	11306--50-----N		11342--50-----N
55		11306--55-----N		
85		11306--85-----N		
90		11306--90-----N		11342--90-----G
100	11305-100-----N	11306-100-----N		11342-100-----G
110		11306-110-----N		

\* G = 25 pieces, N = 100 pieces

Other dimensions and packaging units are available on request