

## BENCHMARKING, METHOD DEVELOPMENT, AND TROUBLESHOOTING: MASSPREP PROTEIN STANDARD MIX

The MassPREP Protein Standard Mix consists of carefully chosen proteins encompassing a wide range of properties. These mixtures contain proteins that vary in isoelectric points, molecular weights, and hydrophobicities. These characteristics provide an attractive intact protein validation mixture that you can use for many varied applications. The mixture is particularly useful as a benchmarking standard for ACQUITY UPLC Protein BEH  $C_4$ , 300Å Columns.

MassPREP Protein Standard Mix		
Protein Sample	Molecular Weight (MW)	Isoelectric Point (pI)
Ribonuclease A, Bovine Pancrease	13.7 K	9.6
Cytochrome c, Horse Heart, 96%	12.4 K	10.25
Albumin, Bovine Serum, 96–99%	66.4 K	5.8
Myoglobin, Horse Heart >90%	16.7 K	6.53
Enolase from Baker's Yeast (S. cerevisiae)	46.7 K	6.53
Phosphorylase b, Rabbit Muscle	97.0 K	7.18

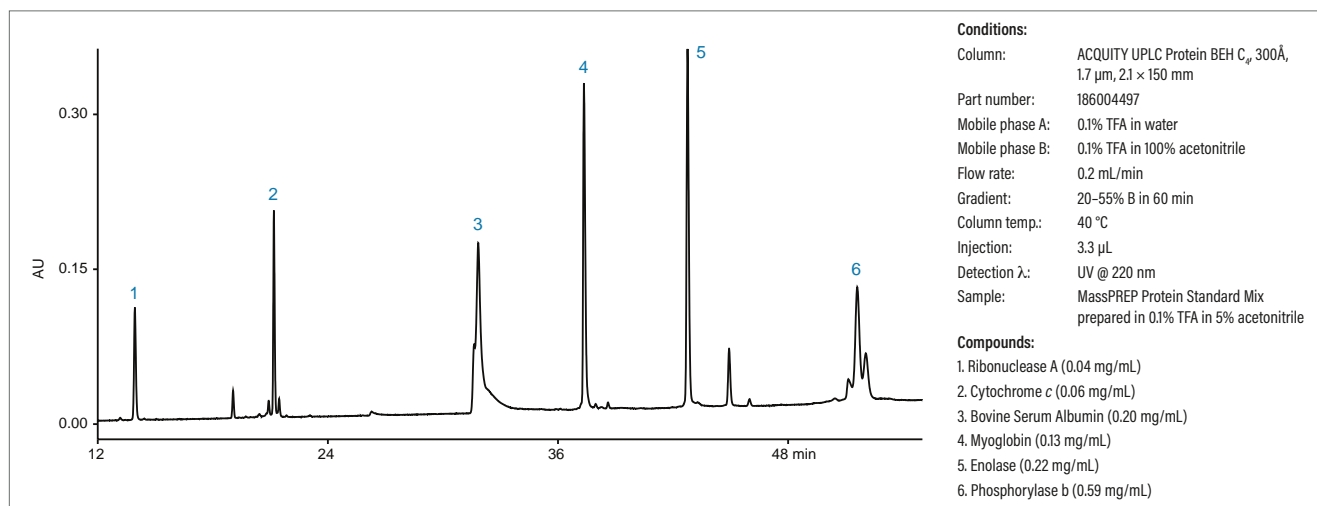
## Ordering Information

### Protein Standards

Description	P/N
MassPREP Protein Standard Mix	186004900
Intact mAb Mass Check Standard	186006552



### MassPREP Protein Standard Mix on an ACQUITY UPLC Protein BEH $C_4$ , 300Å, 1.7 $\mu$ m, 2.1 $\times$ 150 mm Column



Waters carefully formulated and quality-control tested MassPREP Protein Standard Mix can help you confirm adequate performance of a reversed-phase column and LC system before you analyze valuable samples.

## MassPREP Protein Standard Mix Certificate of Analysis

We issue all Waters analytical standards and reagents a certificate of analysis that documents relevant, lot-specific information. We often include a chromatogram that reflects data acquired as you would when using the standard.

